

RecurDyn/Co-Link 控制機電工具箱

除了使用RecurDyn/Control控制介面與外部控制分析軟體MATLAB/SIMULINK進行系統整合外，為了因應未來更複雜的整合工具，FunctionBay Inc早在兩年前進行RD/Colink工具箱的研發，它的使用介面近似於SIMULINK，因此如果已熟悉SIMULINK的用戶，幾乎可以不用學習就可以直接使用。

RD/Co-Link 包含各式數學函數庫、連續函數庫、離散函數庫、非線性函數庫、連接器和制動器。這些常用的驅動器（AC/DC Motor）僅需要定義輸入訊號就可以跟機構模型連接。Fuzzy Library, Neural network Library, Electric Library為擴充函數庫。

RD/Co-Link 函數庫一覽

Source

Chirp, Clock, Constant, Cosine, Digital Clock, Plus, From File, Ground, Ramp, Random Number, Sequence, Sine, Step, Uniform Radom Number, White Noise

Output

Scope, XYPlot, To File, Terminator, Stop

Math

Absolute, Dot, Gain, Logical Operator, Math Function, MinMax Block, Product, Relational Operator, Rounding Function, Sign, Sum, Trigonometric Function

Continuous

Derivate, Integrator, State Space, Transfer Function, Zero-Pole Discrete, Discrete Filter, Discrete Time Integrator, Discrete State Space, Discrete Transfer, Discrete Zero-Pole, First Order Hold, Unit Delay, Zero Order Hold

Nonlinear

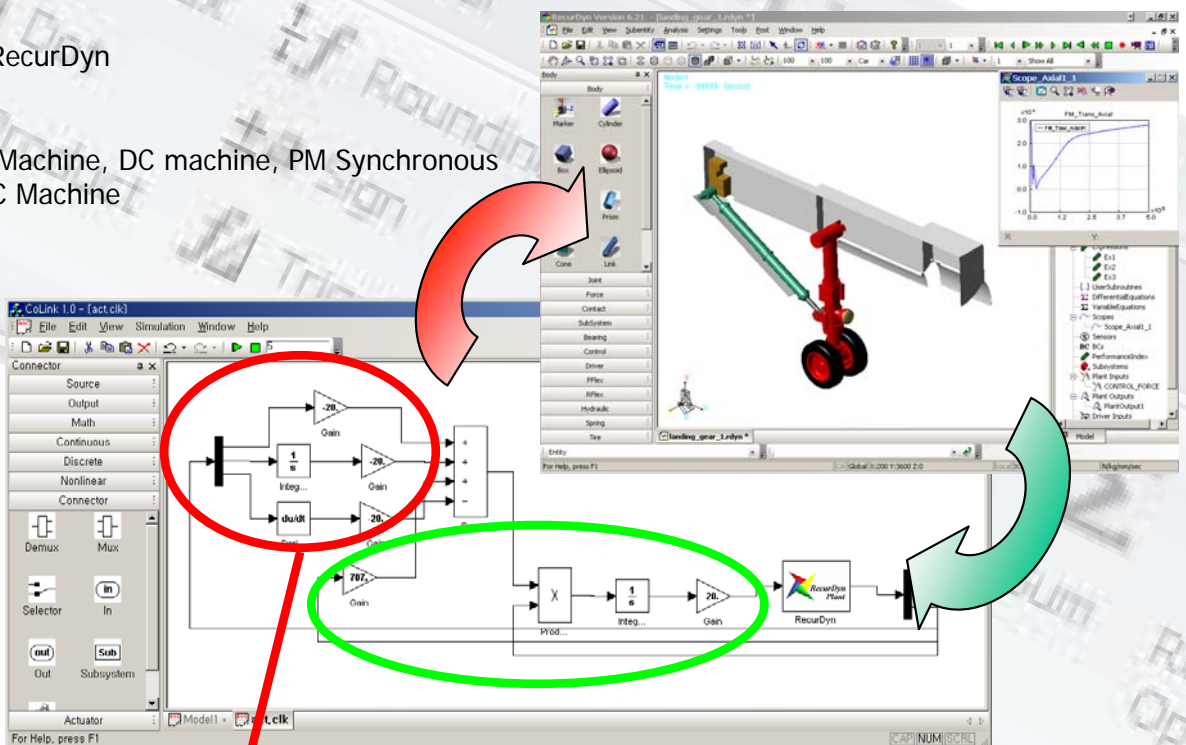
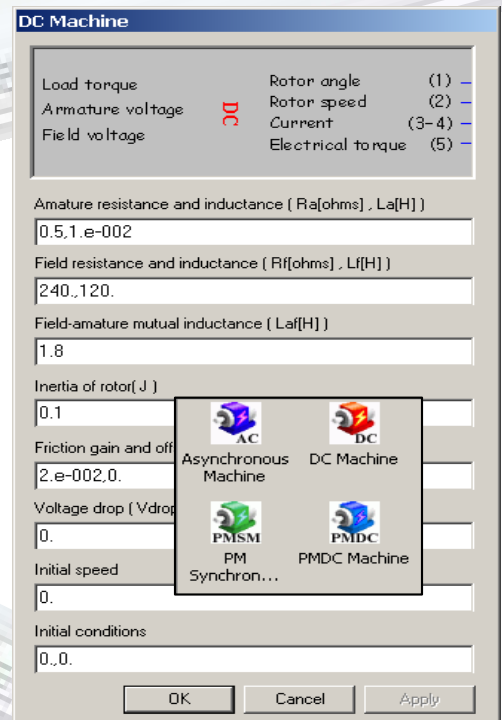
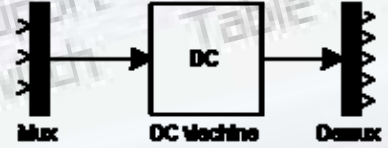
Backlash, Columb&Viscous Friction, Dead Zone, Limiter, Lookup Table, Lookup Table (2D), Multiport Switch, Relay, Rate Limiter, Quantizer, Switch

Connector

Demux, Mux, RecurDyn

Actuator

Asynchronous Machine, DC machine, PM Synchronous Machine, PMDC Machine



PID Controller

Hydraulic tensioner